



WATERGATE PLUS FIRE RETARDANT ABSORBENT BREATHABLE HOUSEWRAP

APPLICATION AND INSTALLATION

Product Description **WATERGATE PLUS** Fire Retardant Absorbent Breathable Housewrap is a coated, non woven polyolefin, specifically designed as a housewrap behind exterior wall claddings.

Product Advantage **WATERGATE PLUS** can be used as a housewrap on timber and steel framed buildings with absorbent and non-absorbent wall claddings direct fixed to framing.



FLAMMABILITY INDEX OF ≤ 5
AS1530: PART 2 1993

NOTE: WATERGATE PLUS MUST NOT BE USED AS A ROOF UNDERLAY.

WATERGATE PLUS can be used in buildings situated in non-cyclonic wind zones up, and including N3.

WATERGATE PLUS will provide temporary weather protection during construction. Translucency of the underlay will enable work to proceed during inclement weather.

WATERGATE PLUS is unaffected by LOSP treated timbers.

FLAMMABILITY

WATERGATE PLUS has a Flammability Index of ≤ 5 and therefore has a Flammability Classification of Low in accordance with AS1530.2.

Application

WATERGATE PLUS must be fixed with printed side out and the non-printed side to the frame.

1. WATERGATE PLUS is applied to all exterior walls from below bearers to the top plate. Fix securely to the frame with fasteners such as galvanized 6mm-8mm staples or 20mm large head galvanized clouts at 300mm centres horizontally and vertically. Additional fasteners should be used around each opening to be cut.

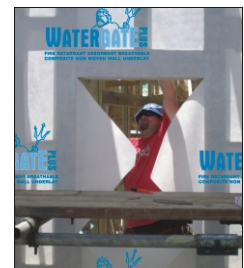
NOTE: Fastenings behind Brick Veneer Cladding must have an equivalent service life to that of Brick Veneer.

2. WATERGATE PLUS when using either 2740mm or 1370mm width, a minimum of 150mm lap is required at joints and all vertical laps must be made over studs. Make good repairs on any forced tears with **Thermakraft PVC Tape** or **Thermakraft ALUBAND Window Sealing Tape**.

3. WATERGATE PLUS is wide enough to come from below the bottom plate to the top plate, covering all windows and door openings. Use extra fastenings around each window or door opening to be cut out.



Fix securely to the frame with fasteners such as 6mm-8mm staples.



On arrival of doors and windows, cut the **WATERGATE PLUS** at each opening on a 45° angle away from each corner. Pull the **WATERGATE PLUS** flaps inside and fasten to inside of frame.

4. Thermakraft ALUBAND Window Sealing System is applied.

Thermakraft ALUBAND is a polymeric faced, high quality bituminous modified self adhesive tape with a polyethylene release backing.

Thermakraft ALUBAND provides timber framed joinery openings around windows with a secondary weather resistant barrier.





FIRE RETARDANT ABSORBENT BREATHABLE HOUSEWRAP

TECHNICAL SPECIFICATIONS

WATERGATE^{PLUS} Fire Retardant Absorbent Breathable Housewrap can be used as a wall sarking on buildings within the following scope:

- Class 1 and Class 10 buildings; and,
- Class 2 to Class 9 buildings subject to specific weathertightness design; and,
- constructed with timber framing in accordance with the BCA 2010, or steel framing in accordance with the BCA 2010; and,
- with absorbent and non-absorbent wall claddings directly fixed to framing; and,
- with masonry veneer in accordance with BCA 2010; and,
- situated in non-cyclonic Wind Zones up to and including N3.

WATERGATE^{PLUS} has a Flammability Index of ≤ 5 and therefore has a Flammability Classification of Low in accordance with AS1530.2.

AS/NZS 4200: 1994 AS A WALL UNDERLAY REQUIREMENTS

AS/NZS 4200 WALL UNDERLAY PROPERTIES	TEST METHOD	PROPERTY PERFORMANCE
Duty	Table 1 AS/NZS 4200.1.1994	Unclassified
Vapour Barrier	ASTM E96 Procedure B	Low
Emittance	AS/NZS 4201.5	Non-Reflective
Water Barrier	AS/NZS 4201.4	High
Absorbency	AS/NZS 4201.6	High
Shrinkage	AS/NZS 4201.1	$\leq 0.5\%$
Fire Resistance	AS1530: Part 2	Low

Durability

WATERGATE^{PLUS} meets the Performance Requirements of BCA 2010 Volume 1 - Class 2 to Class 9 Buildings, Part F1 - Damp and Weatherproofing: Performance Requirement FP1.4:

WATERGATE^{PLUS} will contribute to meeting this requirement. BCA 2010 Volume 2 - Class 1 to Class 10 Buildings, Part 2.2 Damp and Weatherproofing: Performance Requirement P2.2.2.

WATERGATE^{PLUS} will contribute to meeting these requirements providing:

- it is not damaged
- is installed in accordance to the "APPLICATION and INSTALLATION GUIDELINES"
- it is not left exposed for more than 42 days
- is installed by or under guidance of Licensed Building Practitioners
- is compatible with cladding system used

NOTE: WATERGATE^{PLUS} MUST NOT BE USED AS A ROOF UNDERLAY

Storage

WATERGATE^{PLUS} must be stored in clean dry conditions and not in an area with direct sunlight.

Roll Dimension 2740mm x 30m = 82m²

1370mm x 36.5m = 50m²

The recommendations contained in **Thermakraft's** literature are based on good building practice, but are not an exhaustive statement of all relevant information and are subject to any conditions contained in the Warranty. All product dimensions and performance claims are subject to any variation caused by normal manufacturing process and tolerances. Furthermore, as the successful performance of the relevant system depends on numerous factors outside the control of **Thermakraft** (for example quality of workmanship and design), **Thermakraft** shall not be liable for the recommendations in that literature and the performance of the **Product**, including its suitability for any purpose or ability to satisfy the relevant provisions of the Building Code, regulations and standards.



19 Elliot Place, Ringwood, Victoria 3134, Australia
PO Box 6016, Ringwood East, Victoria 3134, Australia
Phone: 03 9870 5880 Fax: 03 9870 5990

Email: sales@thermakraft.com.au Website: www.thermakraft.com.au