

**BRANZ Appraised**  
Appraisal No. 356 [2005]

CI/SfB  
JUNE 2010

**Thermakraft**

# Cover-Up

**The New Revolution**  
in Breather Type Building Membranes

**FIRE RETARDANT . BREATHABLE . WOVEN WALL UNDERLAY**



FLAMMABILITY INDEX OF SS  
AS1530: PART 2 1990

**Thermakraft**

# Cover-Up THE NEW REVOLUTION IN BREATHER TYPE BUILDING MEMBRANES

## FIRE RETARDANT BREATHABLE WOVEN WALL UNDERLAY

# APPLICATION AND INSTALLATION

**Product Description** **Cover-Up Fire Retardant Breathable Woven Wall Underlay** is a coated polyolefin woven sheet, with micro-sized pores that allows the membrane to breath. It is specifically designed to provide very high tensile strength in both directions and increased burst resistance.

### Product Advantage



FLAMMABILITY INDEX OF  $\leq 5$   
AS1530: PART 2 1993

®

**Cover-Up** is a breather type building membrane for use as a wall underlay on timber framed buildings with absorbent wall claddings direct fixed to framing; and with absorbent and non-absorbent wall claddings installed over an 18mm minimum drained cavity.

**NOTE: Cover-Up** MUST NOT BE USED AS A ROOF UNDERLAY, OR AS A SARKING OR UNDERLAY ON WALLS IN DIRECT CONTACT WITH VINYL, METAL OR PVC CLADDINGS; USE DRAINED CAVITY SYSTEM.

**Cover-Up** can be used as an **Air Barrier** where walls are not lined i.e. attic spaces at gable ends, and is suitable for use in all Building Wind Zones of NZS 3604 up to, and including, "Very High".

**Cover-Up** will provide temporary weather protection during construction. Translucency of the underlay will enable work to proceed during inclement weather.

**Cover-Up** can be used as a non-rigid backing material for Stucco Plaster in accordance with the requirements of NZBC Acceptable Solution E2/AS1 Paragraph 9.3.5.1. The Underlay must be supported with 75mm galvanized mesh, or **Thermakraft Stud Strap Hand Held**, or wire at 150mm centres run across cavity battens to limit deflection to a maximum of 5mm in accordance with the requirements of NZBC Acceptable Solution E2/AS1, Paragraph 9.3.5.2.

**Cover-Up** may also be used as a slip layer over rigid backing for Stucco Plaster in accordance with the requirements of NZBC E2/AS1 Paragraph 9.3.3(b).

**Cover-Up** is unaffected by LOSP.

### FLAMMABILITY

**Cover-Up** has a AS1530:Part 2 Flammability Index of  $\leq 5$  and meets the requirements of NZBC Acceptable Solutions C/AS1 Part 6 Table 6.2 surface finish requirements for suspended flexible fabrics.

### Application

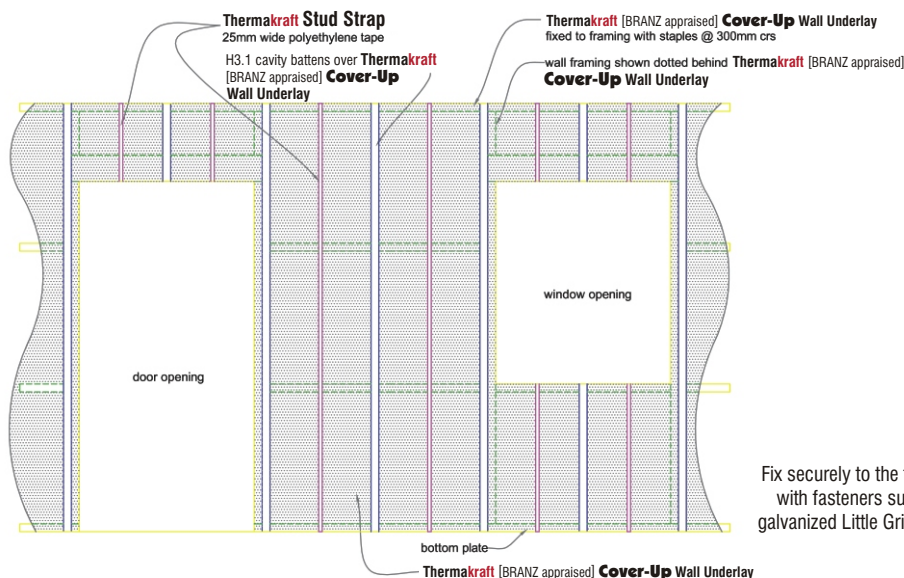
**Cover-Up** must be fixed with printed side out and the non-printed side to the frame.

**1. Cover-Up** is applied to all exterior walls from below bearers to the top plate. Fix securely to the frame with fasteners such as galvanized Little Grippers, 6mm-8mm staples or 20mm large head galvanized clouts at 300mm centres horizontally and vertically. Additional fasteners should be used around each opening to be cut out and use **Thermakraft Stud Strap Hand Held**.

**NOTE:** Fastenings behind Brick Veneer Cladding must have an equivalent service life to that of Brick Veneer (50 years). Refer to NZBC E2/AS1 Table 20.

**NOTE:** All vertical laps must be made over studs. Make good any forced tears with tape.

**IMPORTANT NOTE:** Drained Cavity System; In accordance with NZBC Acceptable Solution E2/AS1 Paragraph 9.1.8.5, where stud spacings are greater than 450mm centres, an intermediate means of restraining the building underlay and insulation from bulging into the drained cavity shall be installed. An acceptable means of achieving this is **Thermakraft Stud Strap Hand Held** fixed horizontally at 300mm centres.



Fix securely to the frame with fasteners such as galvanized Little Grippers



# Cover-Up THE NEW REVOLUTION IN BREATHER TYPE BUILDING MEMBRANES

FIRE RETARDANT BREATHABLE WOVEN WALL UNDERLAY

## APPLICATION AND INSTALLATION

Application  
- continued ...

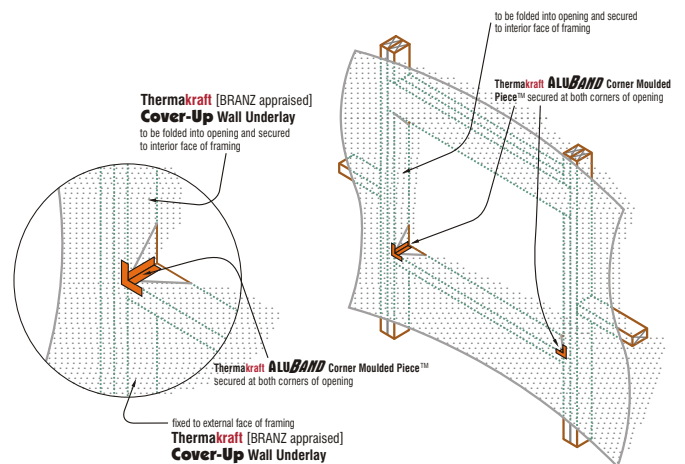
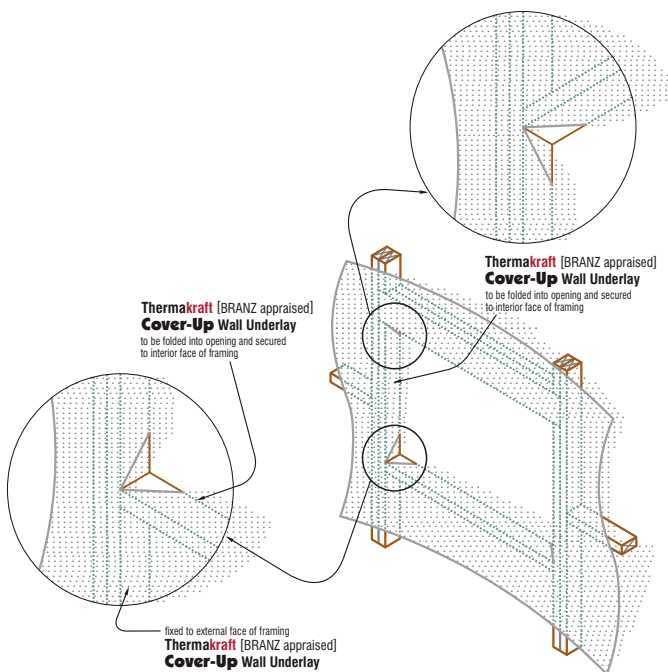
**2. Cover-Up** if using either 2740mm or 1370mm width horizontally or vertical, a minimum of 150mm lap is required at joins and all vertical laps must be made over studs. Make good repairs on any forced tears with **Thermakraft** PVC Tape and/or **Thermakraft ALUBAND** Window Sealing Tape.

**3. Cover-Up** is wide enough to come from below the bottom plate to the top plate, covering all windows and door openings. Use extra fastenings around each window or door opening to be cut out. It is recommended that the wall underlay is not cut and prepared for window installation until the arrival of the windows.



On arrival of doors and windows, cut the **Cover-Up** at each opening on a 45° angle away from each corner. Pull the **Cover-Up** flaps inside and fasten to inside of frame.

**4. Thermakraft ALUBAND** Window Sealing System is applied prior to fitting windows.



**Storage**

**Cover-Up** must be stored in clean dry conditions and not in an area with direct sunlight.

**Roll Dimensions**

2740mm x 36.5m = 100m <sup>2</sup>	1370mm x 54.8m = 75m <sup>2</sup>
2740mm x 27.4m = 75m <sup>2</sup>	1370mm x 36.5m = 50m <sup>2</sup>
2740mm x 18.5m = 50m <sup>2</sup>	1370mm x 18.5m = 25m <sup>2</sup>

For more information regarding **Thermakraft ALUBAND** Window Sealing System (BRANZ no.614 (2008)) refer to the "APPLICATION and INSTALLATION GUIDELINES" or contact **Thermakraft Customer Services** on **0800 806 595**.

# Cover-Up THE NEW REVOLUTION IN BREATHER TYPE BUILDING MEMBRANES

## FIRE RETARDANT BREATHABLE WOVEN WALL UNDERLAY

# TECHNICAL SPECIFICATIONS

**Cover-Up Fire Retardant Breathable Woven Wall Underlay** can be used as a wall underlay on timber framed buildings within the following scope:

- the scope limitations of NZBC Acceptable Solution E2/AS1, Paragraph 1.1; and,
- with absorbent wall claddings directly fixed to framing; and
- with absorbent and non-absorbent wall claddings installed over an 18mm minimum drained cavity; and,
- with masonry veneer in accordance with NZS 3604; and,
- situated in NZS3604 Building Wind Zones up to, and including 'Very High'

**Cover-Up** meets the Performance Requirements of NZBC Clauses B2 Durability B2.3.1(a) 50 years, B2.3.1(b) 15 years and B2.3.2, C/AS1 Part 6 Table 6.2 Flammability  $\leq 5$ , E2 External Moisture, and F2 Hazardous Building Materials F2.3.1.

**Cover-Up** has a AS1530:Part 2 Flammability Index of  $\leq 5$  and meets the requirements of NZBC Acceptable Solution C/AS1 Part 6 Table 6.2 surface finish requirements for suspended flexible fabrics.

NZBC E2/AS1 TABLE 23 AS A WALL UNDERLAY REQUIREMENTS

NZBC E2/AS1 TABLE 23 WALL UNDERLAY PROPERTIES	PROPERTY PERFORMANCE REQUIREMENTS	PROPERTY PERFORMANCE
Absorbency	$\geq 100$ gsm	Does not comply
Vapour Resistance	$\leq 7$ MN.s/g	Pass
pH of Extract	$\geq 6$ and $\leq 9$	Pass
Shrinkage	$\leq 0.5\%$	Pass
Water Resistance	$\geq 20$ mm	Pass
Air Resistance	$\geq 0.1$ MN.s/m <sup>3</sup>	Pass Cover-Up can be used as an air barrier

### Durability

**Cover-Up** meets the Performance Requirements of NZBC Clauses B2 Durability B2.3.1(a) 50 years, B2.3.1(b) 15 years and B2.3.2, C/AS1 Part 6 Table 6.2 Flammability  $\leq 5$ , E2 External Moisture, and F2 Hazardous Building Materials F2.3.1., providing:

- it is not damaged
- installed in accordance to the "APPLICATION and INSTALLATION GUIDELINES"
- it is not left exposed for more than 60 days
- installed by or under guidance of Licensed Building Practitioners
- is compatible with cladding system used

**NOTE: Cover-Up MUST NOT BE USED AS A ROOF UNDERLAY, OR AS A SARKING OR UNDERLAYS ON WALLS IN DIRECT CONTACT WITH VINYL, METAL OR PVC CLADDINGS; USE DRAINED CAVITY SYSTEM.**



The recommendations contained in **Thermakraft's** literature are based on good building practice, but are not an exhaustive statement of all relevant information and are subject to any conditions contained in the Warranty. All product dimensions and performance claims are subject to any variation caused by normal manufacturing process and tolerances. Furthermore, as the successful performance of the relevant system depends on numerous factors outside the control of **Thermakraft** (for example quality of workmanship and design), **Thermakraft** shall not be liable for the recommendations in that literature and the performance of **the Product**, including its suitability for any purpose or ability to satisfy the relevant provisions of the Building Code, regulations and standards.